

DIRECT RECYCLING

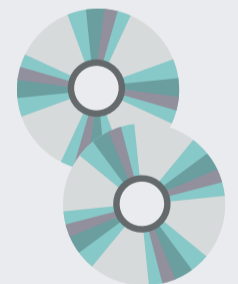
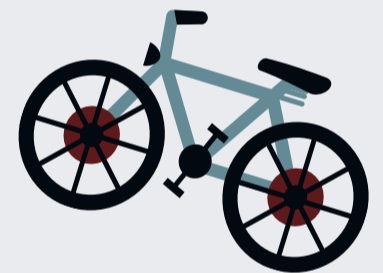


YES PLEASE

- ✓ Toys
- ✓ Furniture
- ✓ Bicycles
- ✓ Tableware, e.g. plates, glasses, cups, cutlery, etc.
- ✓ Lamps
- ✓ Kitchen utensils
- ✓ Small kitchen appliances
- ✓ Garden tools
- ✓ Small garden machinery
- ✓ LPs
- ✓ Pictures, paintings and functional art
- ✓ Art and design
- ✓ Vases and ceramics
- ✓ Christmas decorations
- ✓ Wooden garden furniture
- ✓ Wicker baskets
- ✓ Mirrors

NO THANKS

- ✗ Hazardous waste
- ✗ Fireworks
- ✗ Shoes, clothes and textiles
- ✗ Electronics
- ✗ Books
- ✗ Acid washed oak shelves
- ✗ Broken sofas
- ✗ CDs and DVDs
- ✗ Duvets and bedlinen
- ✗ Mattresses
- ✗ Exercise equipment
- ✗ Shelving systems
- ✗ Large garden machinery
- ✗ Tile tables and marble tables



What you hand over must be in good/usable condition – no broken items.