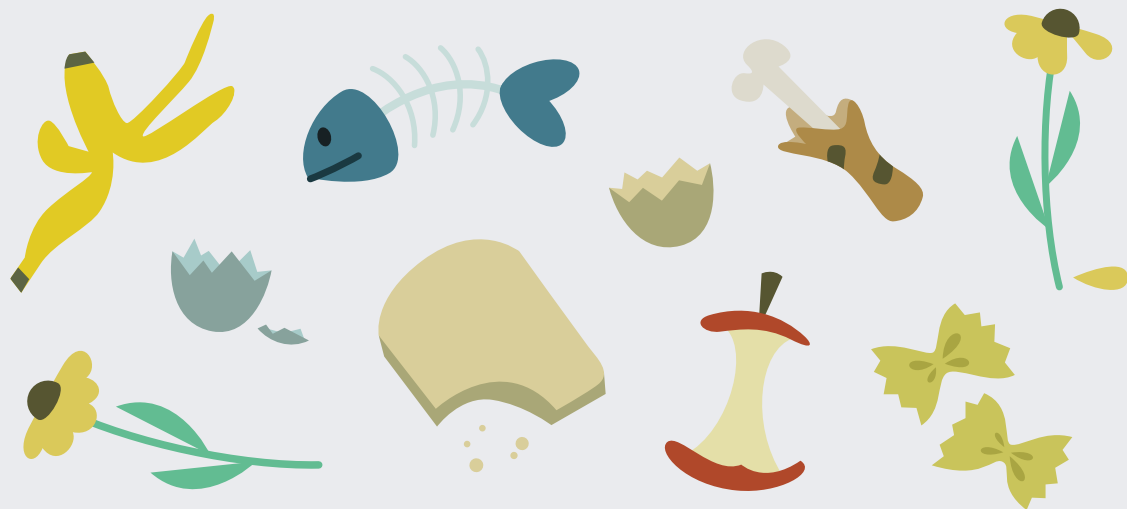


# WASTE GUIDE



GLOSTRUP  
FORSYNING

# FOOD WASTE



## DO YOU NEED BAGS FOR FOOD WASTE?

### OWN CONTAINERS

Get more bags by tying an empty bag on the handle of your food and residual waste container; new bags will be left for you next time your recycling is collected.

2

### COMMUNAL CONTAINERS

Contact your caretaker, waste manager or board to find out how to get more bags.

### PLEASE NOTE:

It is always possible to get more bags for food waste from Glostrup Recycling Centre. For food waste, use only the bags provided.

## YES PLEASE

- ✓ Food waste, raw and cooked
- ✓ Rice, pasta and breakfast cereals
- ✓ Meat, fish and bones
- ✓ Bread and pastries
- ✓ Fruit and vegetables
- ✓ Gravy, sauce and fat
- ✓ Eggs and shells
- ✓ Nuts and shells
- ✓ Coffee grounds and coffee filters
- ✓ Tea leaves and tea filters
- ✓ Used kitchen roll
- ✓ Cut flowers

## NO THANKS

- ✘ Soil
- ✘ Animal bedding, e.g. cat litter and straw from rabbits
- ✘ Potted plants
- ✘ Serviettes
- ✘ Baking paper and similar

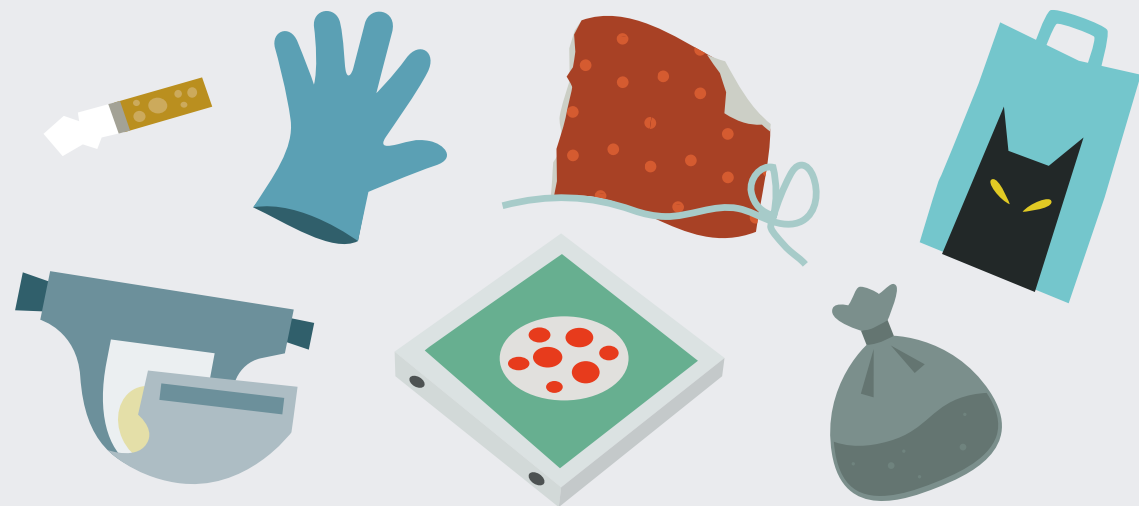
## WEEKLY EMPHYING IN THE SUMMER

Households with individual food and residual waste containers have weekly emptying in June, July and August.

We ask you to wash and clean the container when necessary.

3

# RESIDUAL WASTE



## RESIDUAL WASTE IN TWO-SECTION CONTAINERS

### OWN CONTAINERS

You must put the container out for emptying yourself, unless you have set up a container stand at the boundary of your property or have your container collected from elsewhere on your property.

If you forget to put the container out, you must store the residual waste securely at your property until the next collection. It is not possible to take residual waste elsewhere.

The weight of the container must be below 35 kg. You can always buy stickers for extra collection of residual waste.

**NB:** Detached and terraced houses have the option to pay for weekly waste collection all year round.



## YES PLEASE

- ✓ Nappies, sanitary pads and cotton buds
- ✓ Crisp bags and coffee bags
- ✓ Cigarette butts
- ✓ Disposable gloves and cloths
- ✓ Sweepings
- ✓ Pizza boxes
- ✓ Dirty or wet paper and cardboard
- ✓ Soot and ash (cooled and wrapped up)
- ✓ Cat litter
- ✓ Vacuum cleaner bags (in sealed bags)
- ✓ Gift wrapping paper and ribbon
- ✓ Animal excrement

## NO THANKS

- ✗ Waste that can be recycled
- ✗ Batteries and electronics
- ✗ Hazardous waste
- ✗ Stone and soil
- ✗ Building waste
- ✗ Chemicals

### TIPS

Squash down the waste so you have room for your other residual waste.

Squeeze the air out of the bag before tying the knot so that it takes up less space in the container.



# FOOD & DRINK CARTONS



## HOW TO SORT CARTONS

Food & drink cartons must be sorted into plastic. They will be separated out at the sorting facility.

If there is a plastic lid on the carton, unscrew it before sorting. Straws and other items must be removed before recycling.

Food & drink cartons take up a lot of space. Squash them down before placing them in the container so they take up less space.

## YES PLEASE

- ✓ Milk cartons
- ✓ Yogurt pots and cartons (rinsed)
- ✓ Cartons for drinks, e.g. juice, cocoa, squash and similar
- ✓ Cartons for food, e.g. peeled tomatoes, beans and similar

## NO THANKS

- ✗ Pizza boxes
- ✗ Packaging bags of several materials for food, e.g. coffee bags and crisp bags
- ✗ Products composed of different materials that cannot be separated
- ✗ Food waste
- ✗ Cardboard tableware and plastic-coated cardboard

## REMEMBER

The packaging must be emptied and, if necessary, lightly rinsed with cold water to remove the worst residues.







# PLASTICS



## SQUASH DOWN THE PLASTIC

Plastic is sorted together with food & drink cartons. They will be separated out at the sorting facility.

If you sort your plastic smartly, it will take up less space. For example, you can put smaller pieces of rigid plastics into larger pieces of rigid plastics.

You can also collect smaller pieces of soft plastics in larger pieces of soft plastics. You can squeeze the air out of bags.

## YES PLEASE

- ✓ Plastic packaging
- ✓ Plastic lids, tubs, bottles, bags and buckets
- ✓ Plastic foil
- ✓ Clingfilm
- ✓ Toys without electronics and PVC
- ✓ Bubble wrap
- ✓ Plastic bags without metal film

## NO THANKS

- ✘ Plastic packaging carrying hazard symbols
- ✘ Polystyrene
- ✘ Medicine packaging
- ✘ Rubber
- ✘ Margrethe bowls and other melamine
- ✘ PVC, e.g. rainwear, rubber boots, beach toys, beach balls, swimming armbands and plumbing pipes. Check for PVC mark
- ✘ Packaging from silicone, sealant and similar

## REMEMBER

The plastic must be emptied and, if necessary, lightly rinsed with cold water to remove the worst residues.





# PAPER



## REDUCE PAPER CONSUMPTION

It is possible to reduce paper consumption, e.g. by saying “No thank you to advertising literature and weekly newspapers” and “No thank you to magazines, etc.”.

It is often possible to have online subscriptions as an alternative to printed versions.

## YES PLEASE

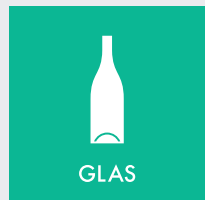
- ✓ Newspapers, weeklies, magazines and advertising literature
- ✓ Letters
- ✓ Envelopes (including window envelopes)
- ✓ Brochures
- ✓ Photocopies
- ✓ Writing and drawing paper
- ✓ Receipts

## NO THANKS

- ✘ Plastic packaging around magazines, etc.
- ✘ Cartonboard
- ✘ Gift wrapping paper
- ✘ Gift wrapping ribbon and string
- ✘ Books
- ✘ Oatmeal bags, flour bags and similar
- ✘ Egg boxes
- ✘ Used kitchen roll
- ✘ Wet paper

## IN DOUBT?

Is it paper or cardboard? Cartonboard is made of strong paper and frays if you tear it. Cartonboard is best recycled together with cardboard and must therefore go with cardboard.



# GLASS



## EMPTY PACKAGING

The packaging must be emptied and, if necessary, lightly rinsed with cold water to remove the worst residues.

If you remove the metal lids from the glass packaging, they can be sorted as metal.

The container with glass gets heavy very quickly. Please note, that the weight of the container must be below 35 kg.

## YES PLEASE

- ✓ Glass bottles without a deposit
- ✓ Jam jars
- ✓ Preserving jars
- ✓ Wine bottles
- ✓ Drinking glasses (not crystal)
- ✓ Pieces of broken glass
- ✓ Vitamin jars

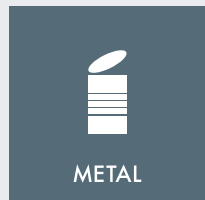
## NO THANKS

- ✘ Ceramics and stoneware
- ✘ Crystal glass
- ✘ Porcelain
- ✘ Ovenproof glassware and dishes
- ✘ Glass art
- ✘ Windows and panes
- ✘ Medicine bottles
- ✘ Light bulbs
- ✘ Mirrors

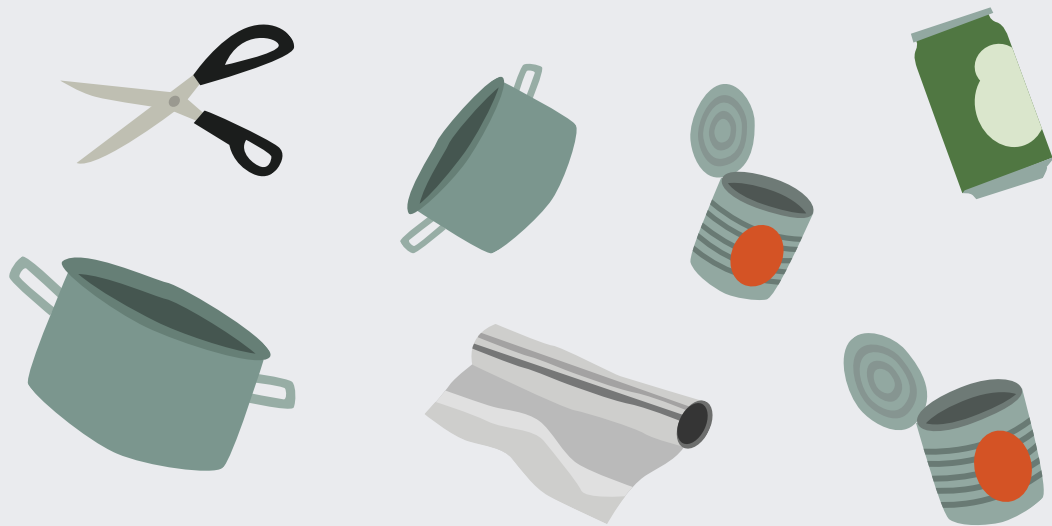
## USE THE GLASS CUBES...

... if you live in an apartment block where you do not have a container for glass.





# METAL



## SQUASH THE PACKAGING

Squash cans or other soft metal items before throwing them out – they will then take up less space.

You can, e.g. put smaller metal parts into larger metal items.

## YES PLEASE

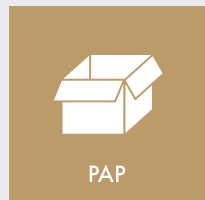
- ✓ Tins
- ✓ Drinking cans
- ✓ Metal lids, e.g. from jars
- ✓ Capsules without coffee
- ✓ Pots and pans
- ✓ Foil trays
- ✓ Cutlery
- ✓ Kitchen knives
- ✓ Scissors
- ✓ Tealight holders without candles
- ✓ Nails and screws

## NO THANKS

- ✗ Metal with electronics (anything connected to a power supply or batteries)
- ✗ Spray cans
- ✗ Crisp bags
- ✗ Freezer bags
- ✗ Coffee bags
- ✗ Metal with chemicals

## REMEMBER

The packaging must be emptied and, if necessary, lightly rinsed with cold water to remove the worst residues.



# CARDBOARD



## HANDLING CARDBOARD

### OWN CONTAINERS

You can either collect cardboard in your container or put it out with bulky waste folded, bundled with string or placed in a cardboard box.

**NB:** You can request to add a cardboard container to your allotment. If you don't add it, you can still put out cardboard for the collection of bulky waste.

### COMMUNAL CONTAINERS

You can put your cardboard in the cardboard containers in your waste area.

## YES PLEASE

- ✓ Egg boxes
- ✓ Cartonboard
- ✓ Corrugated cardboard
- ✓ Cardboard packaging, e.g. from shoes, toothpaste, dishwasher tablets, toys, etc.
- ✓ Small pieces of cardboard
- ✓ Dry food packaging, e.g. from cornflakes, chocolate, etc.
- ✓ Toilet and kitchen roll tubes

## NO THANKS

- ✗ Food & drink cartons
- ✗ Wet cardboard
- ✗ Dirty cardboard
- ✗ Plastic-coated cardboard
- ✗ Large boxes for furniture (must go with bulky waste)
- ✗ Pizza boxes

### TIP

Fold up the cardboard and, if necessary, cut it into smaller pieces so it can easily go in the container.





# TEXTILE WASTE



## NOT DIRECT RECYCLING

Textile waste is not sent for direct recycling. If you want the clothing to be recycled, you need to take it elsewhere.

## YES PLEASE

- ✓ Unusable clothes
- ✓ Reusable clothing that you do not want to sell or donate
- ✓ Socks and underwear with holes
- ✓ Bedding and linen with holes
- ✓ Ruined shoes, bags and belts
- ✓ Unusable cuddly toys
- ✓ Worn-out towels
- ✓ Stained and worn-out curtains and tablecloths
- ✓ Yarn remnants

## NO THANKS

- ✘ Blankets and pillows
- ✘ Wet, damp or mouldy textiles
- ✘ Nappies
- ✘ Textiles with paint and chemicals on
- ✘ Textiles with electronics
- ✘ Carpets

## HOW TO DISPOSE OF TEXTILE WASTE

You should put the sorted textile waste with bulky waste in transparent plastic bags.





# HAZARDOUS WASTE



## HOW TO HAND OVER HAZARDOUS WASTE

### OWN CONTAINERS

Put hazardous waste in the red box. Remember your name on the box. When it is full, put it at the kerbside just before collection time – except in the case of garden waste. The driver will replace it with an empty box.

**NB:** Allotments can request to add a red box for sorting hazardous waste. If you don't add it, you can hand it in at our recycling centre.

### COMMUNAL CONTAINERS

If you have an environmental cabinet, the hazardous waste should be taken there. If you do not have one, your board should contact Glostrup Forsyning. Hazardous waste can always be taken to the recycling centre.

## YES PLEASE

- ✓ Chemicals and other products carrying hazard symbols – including empty packaging
- ✓ Paint, varnish and oil
- ✓ Herbicide and insecticide
- ✓ Spray cans
- ✓ Light bulbs
- ✓ Thermometers
- ✓ Batteries

## NO THANKS

- ✘ Gas and pressure cylinders \*
- ✘ Fluorescent tubes \*
- ✘ Large batteries, e.g. car batteries, etc. \*
- ✘ Fireworks
- ✘ Medicines/clinical waste

\* Should be taken to the recycling centre instead

See the detailed list here:



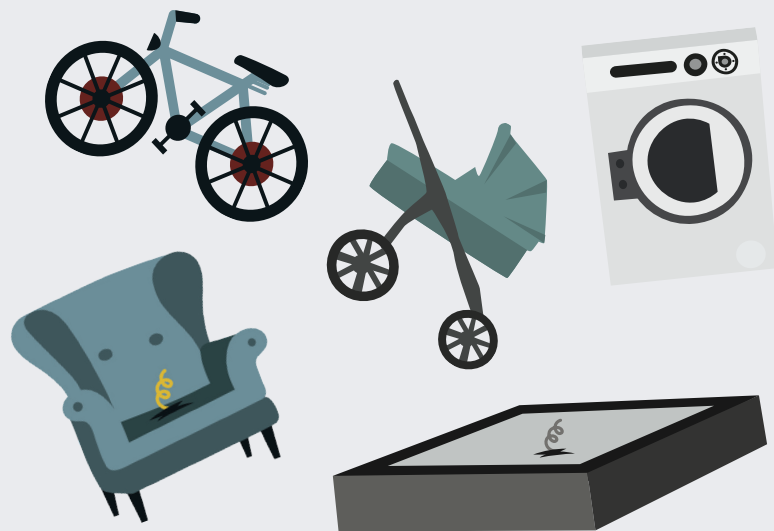
### TIP

Hazardous waste can also be taken to the recycling centre.





# BULKY WASTE



## REMEMBER

The waste must be sorted by waste type and put out in transparent sacks.

The sorted waste must be put where it can be seen by the driver.

If the waste is long or large, it should be separated into smaller parts.

## HOW TO GET BULKY WASTE COLLECTED

### OWN CONTAINERS

Bulky waste is collected each month throughout the year. The waste should be at the kerbside before 6.00 a.m. on the day of collection.

**NB:** Allotment associations have different requirements for how their waste should be put out. Some have to put it at the kerbside ready for collection. Others have to put it just inside the allotment gate facing the road. Ask your board if in doubt.

### COMMUNAL CONTAINERS

Apartment blocks often have a bulky waste room. If in doubt, we recommend that you ask your caretaker.

## YES PLEASE

- ✓ Engines (emptied of fluids)
- ✓ Unpainted indoor wood
- ✓ Cardboard
- ✓ Large items made of iron and metal
- ✓ Combustibles
- ✓ Furniture with springs
- ✓ Electronics
- ✓ Porcelain
- ✓ Hard white goods (appliances)

## NO THANKS

- ✘ Painted outdoor wood
- ✘ MDF and masonite
- ✘ PVC (must be taken to the recycling centre)
- ✘ Garden furniture (treated wood, mixed products and plastic must be taken to the recycling centre)
- ✘ Table tops, etc., made of marble and other stone materials
- ✘ Building waste
- ✘ Hazardous waste, oil and chemical waste, fluorescent tubes, light bulbs, batteries and car batteries

You can also take your sorted bulky waste to the recycling centre.







# GARDEN WASTE



## HOW TO GET GARDEN WASTE COLLECTED

### OWN CONTAINERS

The waste must be at the kerbside before 6.00 a.m. on the day of collection. It is possible to buy a container for garden waste.

**NB:** Allotment associations have different requirements for how their waste should be put out. Some have to put it at the kerbside ready for collection. Others have to put it just inside the allotment gate facing the road. Ask your board if in doubt.

### COMMUNAL CONTAINERS

Apartment blocks often have garden waste containers. If in doubt, we recommend that you ask your caretaker.

## YES PLEASE

- ✓ Grass
- ✓ Leaves
- ✓ Branches
- ✓ Hedge trimmings
- ✓ Withered perennials

## NO THANKS

- ✗ Stumps and roots
- ✗ Soil and gravel
- ✗ Turf

## HOW TO HAND OVER GARDEN WASTE

- In paper sacks under 15 kg.
- In tied bundles (less than 1 m in length).
- In containers of 140 or 240 L (your container may weigh maximum 35 kg).



# THE RECYCLING CENTRE

## IMPORTANT RULES AT THE RECYCLING CENTRE

- The towing vehicle may have a maximum total weight of 3,500 kg.
- You are obliged to comply with the rules and follow the staff's instructions whilst you are at the recycling centre.
- Oil and chemical waste, as well as eternit (fibre-cement board), must be handed over directly to the recycling centre staff and only in small quantities.
- The waste must be in clear sacks.

## SORT THE WASTE AT HOME

As far as possible, your waste should be sorted at home. If you are in doubt about anything, you are very welcome to ask the staff at the recycling centre.

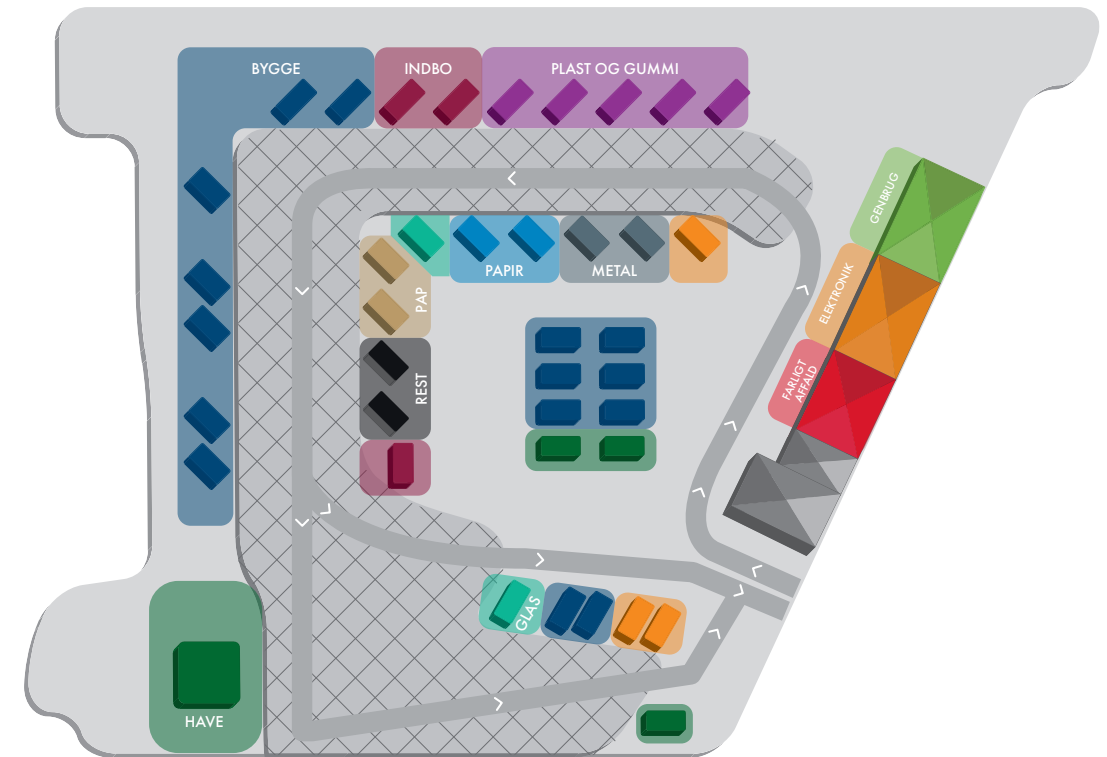
## NO THANKS

- Residual waste
- Food waste
- Medicines/clinical waste (should be taken to a pharmacy)

## YOU WILL FIND GLOSTRUP RECYCLING CENTRE HERE

Glostrup Genbrugsstation, Paul Bergsøesvej 39, 2600 Glostrup

## MAP OF THE RECYCLING CENTRE



- |           |               |              |                    |                 |                              |
|-----------|---------------|--------------|--------------------|-----------------|------------------------------|
| Cardboard | Glass         | Building     | Metal              | Electronics     | Direct recycling             |
| Paper     | With textiles | Garden waste | Plastic and rubber | Hazardous waste | Residual waste after sorting |

# WASTE TIPS FOR EVERYONE WITH INDIVIDUAL CONTAINERS

## EMPTYING

- The container must be at the kerbside before 6.00 a.m. on the day of emptying.
- Make sure the handles face the access route.
- Remember that all packaging must be emptied of contents and, if necessary, lightly rinsed with cold water before it is placed in the container.
- If you forget to put your food and residual waste container out for emptying, it is your responsibility to store the waste properly until the next emptying day. If you do not have enough space, you can choose to buy a sticker for a sack for extra emptying of residual waste and put it next to the container at the next emptying.

## WHERE SHOULD YOU PUT YOUR CONTAINERS?

You decide where you put your containers, but they must be at the kerbside on the day of emptying. See [glostrupforsyning.dk/affald](https://glostrupforsyning.dk/affald) for requirements for the location of containers.

## SAFE WASTE COLLECTION DURING WINTER

When it's winter, it's cold and dark. So it is important to clear off snow, salt the way and light up your access way to your containers. Then it is safe for the waste collector to empty your waste containers.

## DETACHED AND TERRACED HOUSES: PURCHASE OPTIONS

You have the option of requesting to pay to have your food and residual waste collected from an approved location on your property other than the boundary.

Two-section food and residual waste containers are generally emptied fortnightly, but weekly in June, July and August. You have the option of paying for weekly emptying all year round.

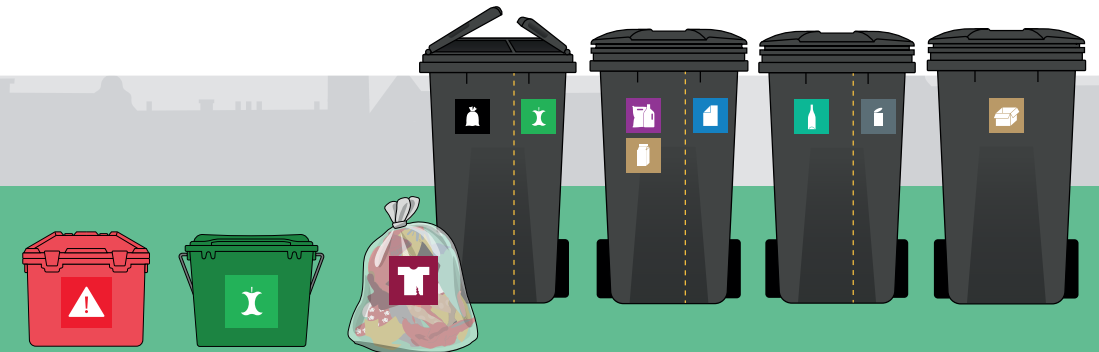
See requirements for an approved location and prices at [glostrupforsyning.dk](https://glostrupforsyning.dk).

## ALLOTMENTS: ADD A CARDBOARD CONTAINER OR RED BOX

**Cardboard:** You can request to add a cardboard container to your allotment. If you don't add it, you can still put out cardboard for the collection of bulky waste.

**Hazardous waste:** You can request to add a red box for hazardous waste sorting to your allotment. If you don't add it, you can hand it in at our recycling centre.

Make a request by writing to us at [affald@glostrupforsyning.dk](mailto:affald@glostrupforsyning.dk).



## TEXT SERVICE

Subscribe to our Text service to get a Text or email prior to emptying.

You can subscribe and unsubscribe at [glostrupforsyning.dk/affald](https://glostrupforsyning.dk/affald).

The service is also used for other generally relevant waste information.



## WASTE NOT COLLECTED?

If your waste has not been collected, you should report it immediately.

You can find out how to do this at [glostrupforsyning.dk/affald](https://glostrupforsyning.dk/affald).

## USE THE APP 'AFFALDSPORTAL' TO KEEP TRACK OF YOUR WASTE COLLECTION

Use the app to get help sorting your waste, see emptying days, order stickers for extra residual waste collection and more.

You can download the app in App Store or Google Play.

## WASTE CALENDAR

Find your waste calendar at [glostrupforsyning.dk/affald](https://glostrupforsyning.dk/affald). There may be changes in the emptying days due to, e.g. Christmas and New Year.

# WASTE TIPS

## EMPTY THE PACKAGING

Remember that the packaging must be emptied and, if necessary, lightly rinsed with cold or used dishwashing water.

## TIPS FOR LESS FOOD WASTE

- Consider ordering meal boxes.
- Make a weekly meal plan.
- Set aside a shelf in the refrigerator for food that needs to be eaten quickly.
- Use leftovers for new dishes, e.g. stews.
- Eat leftovers for breakfast.
- Store leftovers in the freezer.

## EXCESS WASTE COLLECTED FOR FREE

Do you occasionally have excess cartons, plastics, paper, glass, metal or cardboard? You can sort and collect it in clear plastic sacks and leave them next to your container. The waste collector will then pick it up when emptying the container - for free.

## GET HELP WITH WASTE SORTING

Find help at [glostrupforsyning.dk/affald](https://glostrupforsyning.dk/affald) or use the app.





You can find Glostrup Forsyning  
on Facebook, LinkedIn and  
[glostrupforsyning.dk](http://glostrupforsyning.dk).

