



**GET YOUR  
WASTE  
CIRCULATING**

# WASTE DISPOSAL GUIDE FOR GLOSTRUP

Take charge of your waste disposal →



GLOSTRUP  
FORSYNING  
Supply & Distribution Services

# WE GET WASTE CIRCULATING

➔ Glostrup needs to be greener. We are achieving this by recycling our waste. By sparing a thought for it in daily life, we can make a difference to the environment.

In this brochure you can read about how to sort your waste for recycling. The better you can sort, the more we can recycle. We retrieve the sorted waste so that it can be remade into new products.

**GET YOUR  
WASTE  
CIRCULATING**

If you live in a house or allotment **4**

Get a text message before your waste is picked up **6**

Missed pick-up **7**

If you live in a flat **8**

Refuse collection **10**

Paper **12**

Plastic **14**

Batteries **16**

Small electrical items **17**

Glass **18**

Metal **20**

Garden waste **22**

Bulky waste **24**

Glostrup Recycling Station **26**

Cardboard **28**

Hazardous waste **29**

Get more information here **30**

Contact us **31**

# IF YOU LIVE IN A HOUSE OR ALLOTMENT

All your waste must be wheeled to the edge of your property for emptying. The exception is refuse collection, which occurs at a fixed location and is picked up by refuse collectors.

Remember that all packaging must be emptied and (if necessary) lightly rinsed with cold water before placing it in the recycling bin.

- Wheel the bin to the edge of your property before 6 a.m. on the pick-up day
- Make sure the handles face the road
- You can be notified by text message before the pick-up – see next page
- You can elect to have your refuse collected fortnightly. However, pick-ups will take place once a week during the 3 summer months.

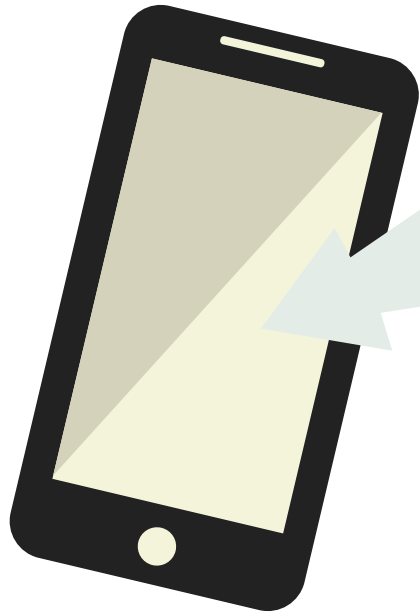
## MAKE LIFE EASIER FOR THE REFUSE COLLECTOR

- Clear away snow and apply salt when conditions are slippery
- Tidy your driveway
- Light your driveway



# GET A TEXT MESSAGE BEFORE PICK-UP

➔ Sign up for our SMS service to be notified on your mobile the day before we pick up your refuse.



## HOW TO SIGN UP FOR A PRE-PICK-UP SMS

1. Go to [glostrupforsyning.dk/affald](http://glostrupforsyning.dk/affald) or the Affaldsportal app
2. Look for 'sms før tømning'
3. Follow the instructions

You decide which pick-up reminder texts to receive, and you can unsubscribe at any time.

If you live in a house or allotment

# MISSED PICK-UP

➔ Report any missed pick-ups at [glostrupforsyning.dk/affald](http://glostrupforsyning.dk/affald) or via the Affaldsportal app.

Remember that pick-up days can change around Christmas and New Year.

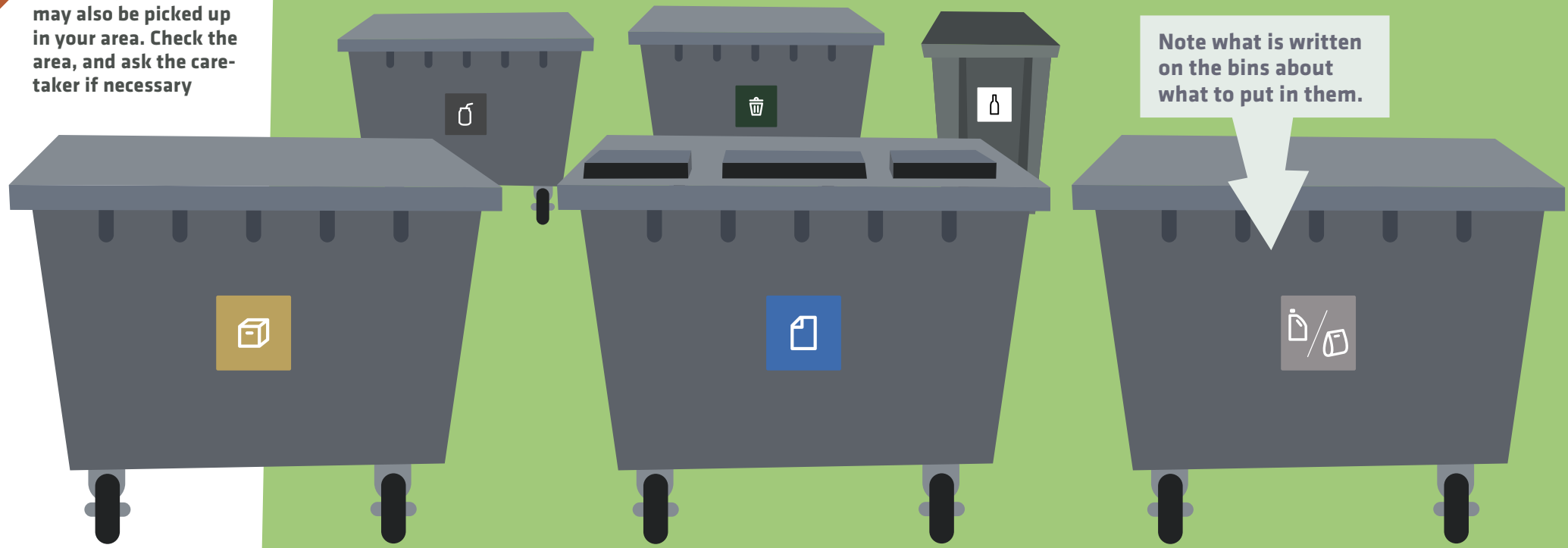
## How to report missed pick-ups:

- Click on [glostrupforsyning.dk/tomning](http://glostrupforsyning.dk/tomning)
- Look for 'manglende tømning'
- Click on Renoweb
- Select the type of waste in question (i.e. household refuse, garden waste, bulky waste, paper/plastic and glass/metal)
- Type in your address
- Select the type of complaint
- Write in the comment field if you want a reply from the refuse collector. Include your phone number or email address
- Press 'send'

# IF YOU LIVE IN AN APARTMENT BLOCK OR AN AREA WITH COMMUNAL WASTE DISPOSAL



Batteries, ceramics etc. may also be picked up in your area. Check the area, and ask the caretaker if necessary



Note what is written on the bins about what to put in them.

**Sorting improves the CO<sub>2</sub> balance**  
Our CO<sub>2</sub> emissions need to be kept down in order to avoid changing the climate. If all Danes sort all their domestic waste, we will be able to save around 600,000 tonnes of CO<sub>2</sub> emissions a year. That's a big step in the right direction.



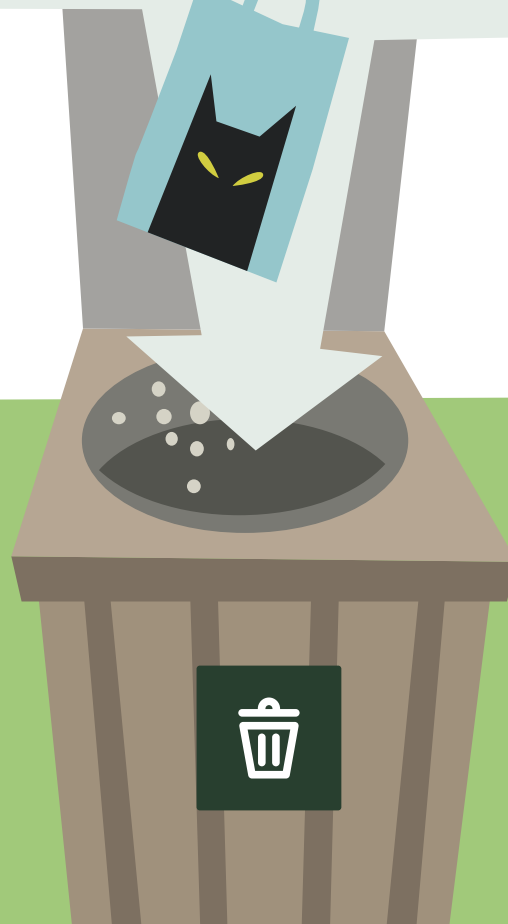
# REFUSE



Refuse is the waste that results from your daily domestic activities. Because it can't be recycled, it gets taken to an incinerator.

## ✓ YES PLEASE

- Food waste
- Milk and juice cartons
- Nappies
- Cigarette ends
- Pizza cartons
- Cat litter
- Coffee grounds (including the filter)
- Vacuum cleaner bags



## ✗ NO THANKS

- Plastic
- Metal
- Glass
- Paper
- Cardboard
- Hazardous waste
- Batteries
- Low-energy bulbs
- Electronics



REFUSE

# PAPER

➔ Paper can be recycled multiple times if it is completely dry when you put it in the bin.

We save energy, wood, water and chemicals by recycling our paper. It requires far less water and energy to recycle paper than to make new paper out of wood.

## AVOID THAT TRIP

You can avoid many trips to the paper recycling bin by refusing ad flyers. Most advertising literature is also available online.

## ✓ YES PLEASE

- Newspapers, magazines and advertisements (without any plastic wrapping)
- Letters
- Envelopes (including window envelopes)
- Brochures
- Photocopies
- Writing and drawing paper
- Phone books

## ✗ NO THANKS

- Cardboard
- Gift wrap
- Plastic (remove the plastic from any wrapped ad flyers you receive in the mail)
- Decorative ribbons and string
- Pizza cartons
- Books
- Oatmeal bags, flour bags etc.
- Cardboard
- Egg cartons

Magazines become newspapers. Newspapers become cardboard boxes, and cardboard boxes become toilet paper and egg cartons.



PAPER

# PLASTIC

➔ Remember to empty packaging and lightly rinse it with cold water to remove the worst of the remnants.

It costs a lot of energy to produce new plastic, and incinerating it harms the atmosphere. By recycling plastic packaging, we avoid unnecessarily emitting CO<sub>2</sub>.

## FROM PLASTIC TO PULLOVER

Plastic packaging is transported to facilities where it is crushed and melted. This plastic then gets incorporated in new plastic products like lamps, garden furniture, office equipment, flower pots, road cones and fleeces. Fleece is made of closely-woven thin plastic threads.



### ✓ YES PLEASE

- Plastic packaging for meat, vegetables and fruit (with contents completely removed)
- Plastic lids
- Plastic tubs
- Plastic bottles
- Plastic containers
- Plastic bags
- Plastic buckets
- Plastic film
- Plastic cutlery
- Cling film
- Toys (except electronic toys or toys containing PVC)
- Bubble wrap
- DVDs and CDs.

### ✗ NO THANKS

- Video and cassette tapes
- Packaging for fruit and meat made from Styrofoam-like plastic
- Plastic packaging/bottles marked with orange hazard symbols
- Styrofoam
- Medication packaging
- Rubber
- Melamine bowls or other items made from melamine
- PVC, such as rainwear, rubber boots, beach toys, beach balls, water wings and plumbing pipes. Check for the PVC symbol
- Tubes that have contained silicone, sealants and the like
- Bags made from corn starch or biodegradable materials



PLASTIC

## Recycling plastic saves oil

The production of plastic requires large quantities of oil. The recycling of plastic reduces the consumption of fossil fuels.

## PLASTIC

Please compress your plastic waste so that it takes up less volume. For example, you can put small plastic waste objects into larger ones.





# BATTERIES



Your used batteries should not end up in the refuse bin. Instead, place them in a 4-litre see-thru bag on top of your bin for plastic and paper.

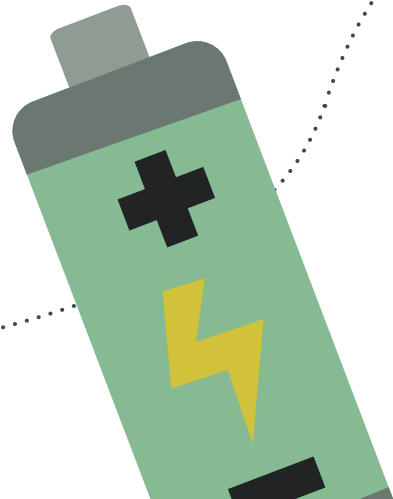
## ✓ YES PLEASE

Dispose of all mini-batteries, such as those used in:

- Toys, flashlights and radios
- Watches, hearing aids and calculators
- Cameras and small electronic gadgets
- Electronic birthday cards and light-up shoes

Also dispose of rechargeable batteries for mobile phones, power tools, camcorders and portable electronics.

**Car batteries** (lead-acid batteries) must still be taken to the recycling station.



# HOUSE AND ALLOTMENT

1. Put batteries into one 4-litre see-thru bag, and small electronics into another.
2. Tie a knot in each bag and place it on the lid of the recycling bin for plastic and paper.
3. The refuse collector will take the bag and ensure that it is handled properly.



# APARTMENT BLOCKS AND COMMON AREAS

1. Batteries or small electronics should be placed in the container located in a common area or in the area for bulky refuse.
2. Ask your caretaker in case of doubt.

# SMALL ELECTRONICS



Used electronics can be recycled. You just need to put them separately in a 4-litre see-thru bag on your recycling bin for plastic and paper, as you would do with batteries.

Electronic waste comprises products designed to operate on power supplied by cords, batteries or solar cells. Your used electronics contain valuable metals that can be recycled.

## ✓ YES PLEASE

- Chargers
- Digital thermometers
- Shavers
- Calculators
- Cameras
- Electric toothbrushes
- Curling irons
- Bike lights
- Toys
- And much more...

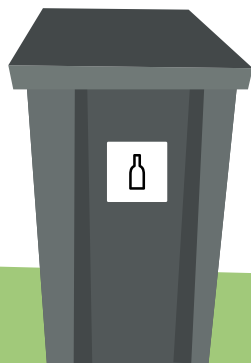
### Maximum bag capacity: 4 litres

You can only dispose of small electronic appliances that will fit into a 4-litre see-thru bag.

# GLASS

➔ By recycling your old glass, you help to save raw materials. Intact bottles are cleaned and reused, while shards become new bottles or glasses after they have been sorted by colour and melted down.

Glass is a valuable resource which can easily be recycled. Remember to put small glasses back into circulation as well.



## ✓ YES PLEASE

- Glass bottles
- Jam jars
- Glass preserving jars
- Wine bottles
- Drinking glasses (not crystal)
- Large shards of glass

## ✗ NO THANKS

- Ceramics
- Crystal
- Porcelain
- Flame-resistant glass
- Flame-resistant pans
- Swept-up glass fragments (whether from indoors or outdoors)
- Glass artworks
- Windows and window panes
- Medicine bottles
- Vases and bowls
- Stoneware
- Light bulbs
- Dishes
- Cups
- Jugs
- Mirrors

Remember that the container must be emptied and lightly rinsed in cold water to remove the worst of the residue, if necessary.

### Glass as insulation

Old bottles and drinking glasses can also be used to make glass wool for insulating houses.



GLASS



# METAL

→ We can save a lot of energy by recycling metal rather than extracting it from scratch.

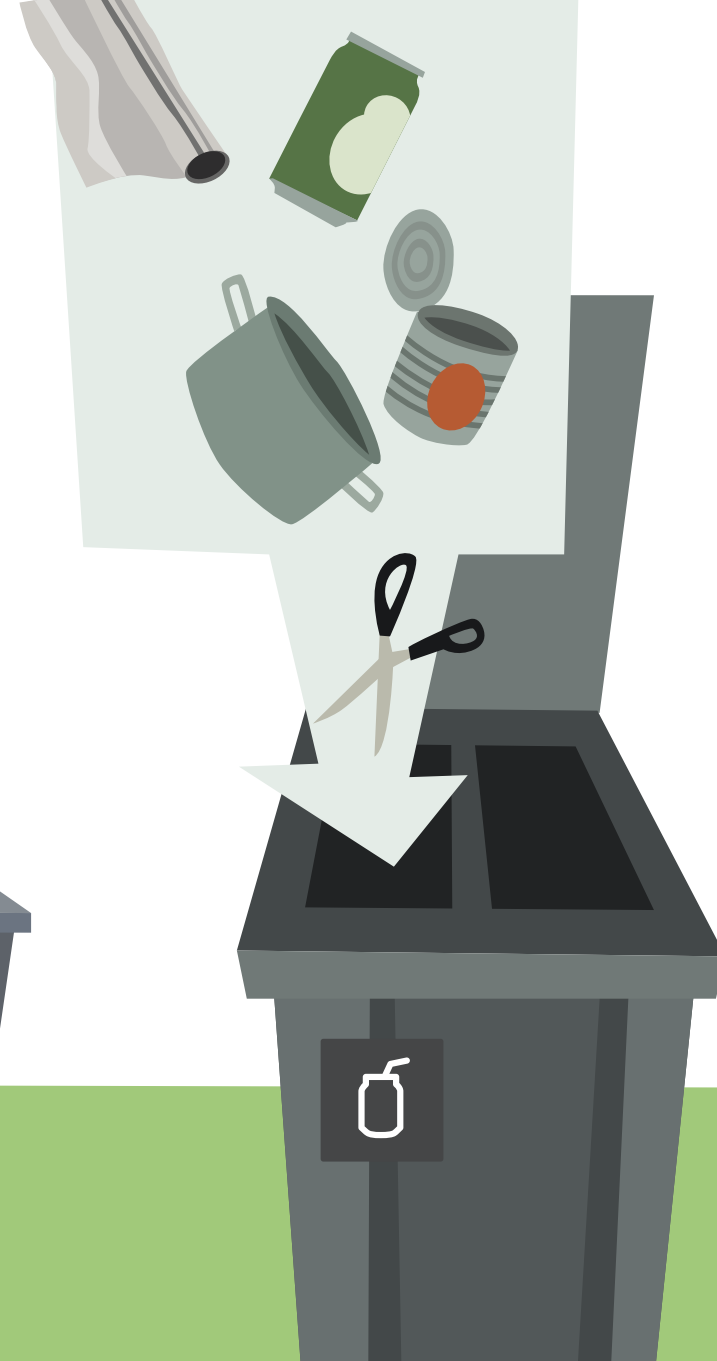
## A SIGNIFICANT GAIN

Recycling aluminium saves up to 95% of the energy it takes to produce new aluminium.

Squash cans before you discard them – they'll take up less volume that way.

### How metal is reborn

Metal factories have machines that smash the metal into fragments. Then plastic, rubber and other materials are pulled off them, so that only the metals are left. The metals are sorted and melted down into ingots which can be used to manufacture new products.



### ✓ YES PLEASE

- Food cans
- Drink cans
- Metal lids from jars etc.
- Bottle caps
- Pots and pans
- Foil trays
- Coffee capsules
- Cutlery
- Kitchen knives
- Scissors
- Tea-light holders
- Tinfoil/silver paper

### ✗ NO THANKS

- Metal containing electronics (i.e. anything that connects to power cables or batteries)
- Spray cans
- Crisp bags
- Cooler bags
- Coffee bags
- Window blinds



METAL

# GARDEN WASTE FOR HOME OWNERS

➔ Your garden waste can easily become nutrient-rich compost. You can either compost it in your own garden, or pass it on for us to do it.

## Bins for garden waste

Bins for garden waste come in two sizes:

- 140 litres
- 240 litres

## IF YOU DECIDE TO COMPOST

- Chop branches into small pieces before you throw them into the composting container
- Turn the pile periodically
- Water the pile during dry periods
- If required, add lime to the pile

Reuse your old 140-litre bin for paper for garden waste



## HOW TO DISPOSE OF YOUR GARDEN WASTE

1. We pick up garden waste at all the houses in Glostrup – check the pick-up days on the pick-up calendar at [glostrupforsyning.dk](http://glostrupforsyning.dk) or via the Affaldsportal app.
2. You can drop off your garden waste in paper bags that you can buy in stores, or else in bins which you can buy from us.
3. Don't forget that you can also drop off your garden waste at our recycling centre.

**Paper bags only, please**  
We only accept garden waste in paper bags.

## ✓ YES PLEASE

- Grass
- Leaves
- Branches
- Hedge trimmings
- Dead perennials
- Potato peelings
- Fruit and vegetables from the kitchen

## ✗ NO THANKS

- Stumps
- Roots
- Soil
- Gravel
- Turf



GARDEN WASTE

# BULKY WASTE



**Bulky waste is collected at all of Glostrup Municipality's dwellings. However, there are different collection systems for individual houses/terraced houses, apartment buildings and allotments.**

We welcome your bulky waste. Just be sure to sort it so that it corresponds to the recycling station's categories, e.g. by separating cardboard from old furniture. Unsorted bulky waste will not be taken.

## Manage pick-ups

You can see the pick-up days at [glostrup-forsyning.dk](http://glostrup-forsyning.dk) or via the Affaldsportal app.

## ✓ YES PLEASE - HOUSES

- Clean wood
- Cardboard (bundled up with biodegradable string)
- Large items made of iron or other metal (50 kg max.)
- Metal fixtures
- Combustibles
- Sprung furniture
- Electronics
- Refrigerators and freezers
- Ceramics and pottery clay

## HOUSES, INCLUDING TERRACED HOUSES

**We pick up bulky waste monthly at houses and terraced houses, year-round. The waste must be standing ready at the roadside edge of your property before 6 a.m. on the pick-up day.**

## ALLOTMENTS

**The waste must be ready just inside your garden gate no later than 6 a.m. on the pick-up day.**

## APARTMENT BLOCKS

**Ask your local caretaker or the building management where to put your bulky waste.**

## ✓ YES PLEASE - APARTMENT BLOCKS

- Large items made of iron or other metal
- Metal fixtures (50 kg max.)
- Combustibles
- Sprung furniture
- Electronics
- Refrigerators and freezers
- Clean wood-based litter



### Remember

You can also drop off your bulky waste at our recycling station.



BULKY WASTE

# GLOSTRUP RECYCLING STATION



**If you want to dispose of waste straightaway, transport it to the recycling station.**

Glostrup Recycling Station is located at 45, Paul Bergsøes Vej.

Opening hours: Monday to Friday 8-18

Saturdays, Sundays and public holidays 10-18

(Closed on 24/12, 25/12, 26/12, 31/12 and 1/1)

## Other important recycling station rules

- The gross vehicle weight of your car plus trailer must not exceed 3,500 kg.
- You must heed the regulations and staff instructions on the recycling station's premises.
- You must deposit oily waste, chemical waste and asbestos cement board directly with the recycling station staff, and only in small amounts.

## CLEAR WASTE SACKS ONLY

Your waste must be in clear sacks. Experience has shown that clear sacks improve separation, hence recycling rates. If you put your waste into black sacks, you will be asked to go home and repack it.

## ✓ YES PLEASE

- Newspapers, magazines and ad flyers
- Bottles and household glass
- Cardboard
- Hard plastic
- Plastic film
- Plastic patio furniture
- Iron and metal
- Concrete, stone, terrazzo and marble
- Soil, clay and gravel
- Electrical scrap
- TVs, portable computers and computer monitors.
- Cable scrap
- Sprung mattresses and upholstered furniture
- Mineral wool and non-recyclable PVC
- Bricks, tiles and gas concrete
- Windows
- Clothes and shoes
- Clean wood
- Pressure-treated wood
- Small combustibles (max. 1 metre), carpets (any length) and roofing felt
- Sanitary ware, porcelain, tempered glass, mirror glass, ceramics, mortar and asphalt
- Refrigerators and freezers
- Garden waste (branches max. 1 metre)
- Tree roots and stumps
- Car tyres
- Recyclable PVC
- Lamps
- Batteries
- Lead-acid batteries
- Oil and chemical waste
- Asbestos cement board
- Plasterboard

## ✗ NO THANKS

- Domestic waste, i.e. perishable waste, food scraps etc.
- Medicines, needles and similar items must be deposited at a pharmacy

## SORT YOUR WASTE IN ADVANCE

Your waste should as far as possible be sorted at home. If you're unsure about anything, please don't hesitate to ask the recycling centre staff.

Note the zoning at the recycling station – i.e. the waste types are grouped according to similarity.





# CARDBOARD

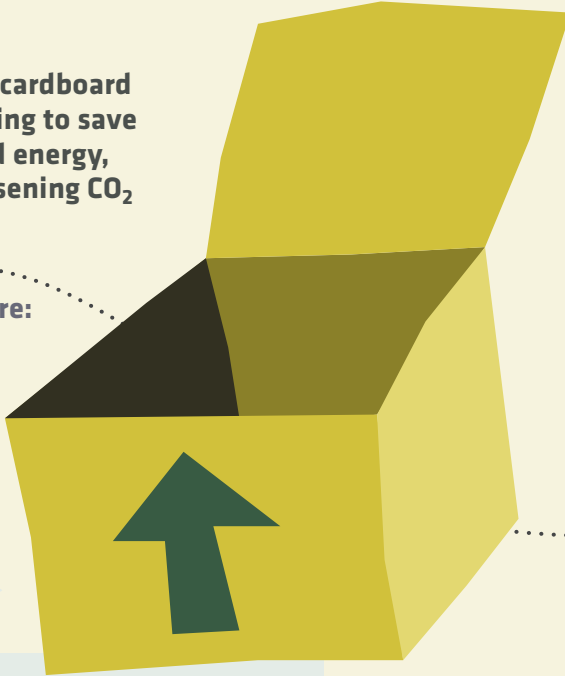
**Cardboard** can be reused up to 10 times.



By recycling your cardboard box, you are helping to save raw materials and energy, and therefore lessening CO<sub>2</sub> emissions.

## Deposit your cardboard here:

- The recycling station
- Communal waste areas
- With bulky waste. It should be bundled up using biodegradable string or collected together in a cardboard box



### ✓ YES PLEASE

- Corrugated cardboard
- Card
- Cardboard boxes
- Cardboard scraps
- Paper bags
- Egg boxes

### ✗ NO THANKS

- Pizza cartons
- Soft plastic
- Gift wrapping
- Plastic tape
- Milk cartons
- Plastic-coated cardboard

## CARDBOARD ONLY

It is important that you should be introducing only cardboard into circulation. So always remember to remove any plastic, Styrofoam or metal staples. Also exclude cardboard that has been in contact with food.

# HAZARDOUS WASTE



There can be serious environmental consequences from not disposing of hazardous waste properly.

Dispose of your hazardous waste at the recycling centre

### ✓ YES PLEASE

- Light bulbs
- Large electronics
- Light-up shoes with batteries
- Cards with lights and batteries
- Pest poisons
- Chemicals and waste oil (includes empty containers)
- Toys with batteries
- Large electronic items
- Leftover paint
- Mobile phones
- Herbicides and fertilizers
- Corrosive cleaning products
- Spray cans (empty and full)

### ✗ NO THANKS

- Leftover medicines and packaging
- Syringes
- Pressurized containers
- Cloths and fluids that could self-ignite
- Pointed or sharp objects
- Fireworks and explosives



## LOCAL FACILITIES

If you belong to a large housing association, ask your caretaker if there is a local facility for hazardous waste.

# GET MORE INFORMATION HERE



## App

Download the Affaldsportal app to your smartphone to quickly check when we'll pick up your waste.



## Facebook

Meet us on Facebook, where we'll pass on the latest news and answer your questions.



## LinkedIn

You'll also find us on LinkedIn, where we'll continuously update you about what we're doing.



## YouTube

On YouTube you'll find lots of our videos about how to improve your waste sorting, and how to do it smarter.



## Internet

If you're in doubt about something, you'll probably find the answer on our site. That's also where you can buy bins and stickers for additional domestic waste bags.



## CONTACT US

### GLOSTRUP FORSYNING

Ørnebjergvej 7  
2600 Glostrup  
Tel.: 43 20 80 20  
forsyning@glostrupforsyning.dk  
www.glostrupforsyning.dk

Opening hours  
Monday-Thursday 9-15  
Friday 9-12

**Recycling station**  
Paul Bergsøes Vej 45  
2600 Glostrup  
Tel.: 43 20 80 50

Opening hours  
Monday-Friday 8-18  
Saturdays, Sundays and  
public holidays 10-18